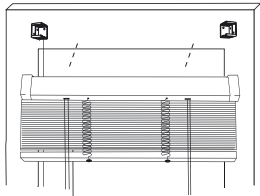
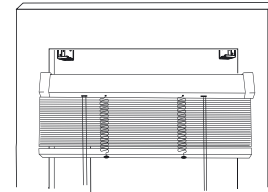
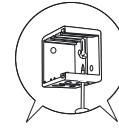


CUT TO SIZE NOT AVAILABLE WITH THIS BLIND.

FACE FIXING

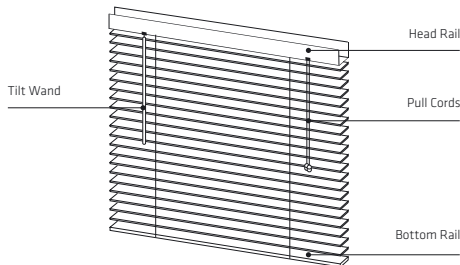


TOP FIXING



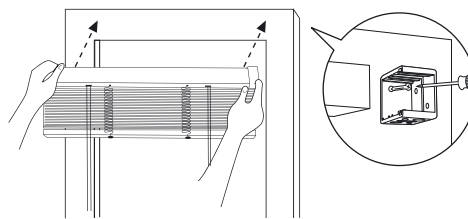
Blind can be face fixed by screwing through the base of the bracket or top fixed by screwing through the top of the bracket.

STEP 1



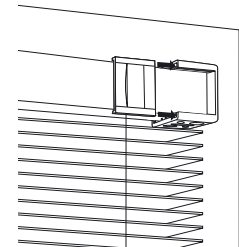
Unpack blind, attach Tilt Wand to hook and ensure the Tilt Wand and Pull Cords are facing outwards.

STEP 2



Measure blind against window for placement and drill pilot holes for screws. Install brackets.

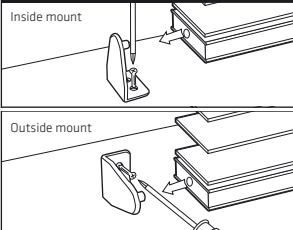
STEP 3



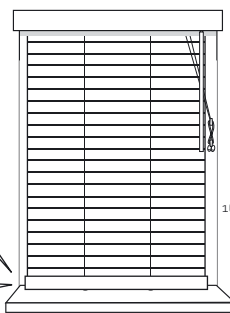
Fit blind into end brackets and slide cover over bracket.

STEP 4

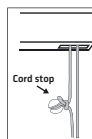
BASE CLIP APPLICATIONS



Install base clip onto bottom of window or wall depending on width of your blind.



Cleat should be fitted to a wall or architrave ensuring that the cord is taut at all times. Cord tensioner must be 1600mm above floor level.



CHECKLIST

- Child safety 'cleat' included.
- Cleat securely fitted to wall or architrave (at least 1600mm above floor level).
- Looped cord guide is kept taut around cleat at all times.
- All warning labels and stickers remain on product.
- Move cots and furniture away from window covering cords or chains.



Child safety devices included

! WARNING

1. A cord guide may be installed lower than 1600mm above floor level if the cord is sufficiently secured or tensioned to prevent a loop 220mm or longer from being formed.
2. If a cord guide is installed lower than 1600mm above floor level it must be designed to prevent a child from being able to remove the cord.
3. If a cleat is used to secure the cord it must be at least 1600mm above floor level because a child is capable of unwinding a cord from a cleat.

! WARNING

WARNING: Young children have died by wrapping loose curtain and blind cords or chains around their necks. Secure cords or chains with cord guides or keep them out of reach by winding them around a cleat. Move cots and furniture away from window covering cords or chains. Do not remove this label.

WARNING: Looped cords, looped bead chains or other flexible looped devices may cause a strangulation hazard for children under 5 years. KEEP CORDS AND CHAINS OUT OF REACH OF CHILDREN.

WARNING: To avoid creating a possible strangulation hazard for children, the window covering must be installed in such a way that a loose cord cannot form a loop 220mm or longer at a height of less than 1600mm above the floor.